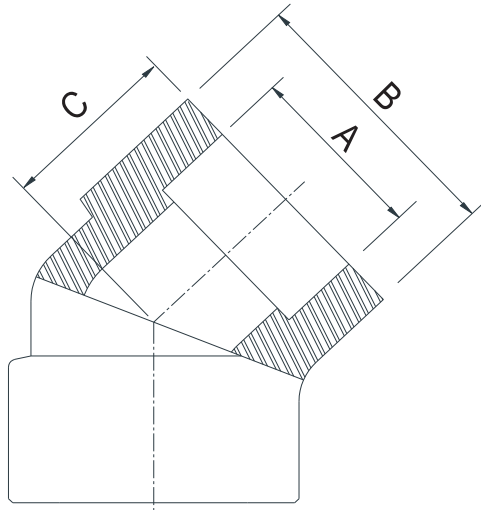


CLASS
3000



SOCKET WELDED ELBOW 45°

No.	Size	A	B	C	Weight
		(mm)	(mm)	(mm)	(Kg / Pc)
1.	½"	22.2	33.8	22.8	0.18
2.	¾"	27.5	39.1	26.7	0.26
3.	1"	34.1	46.3	29.4	0.36
4.	1¼"	42.7	52.3	30.0	0.50
5.	1½"	48.8	59.9	33.0	0.60
6.	2"	61.2	73.3	41.5	0.90