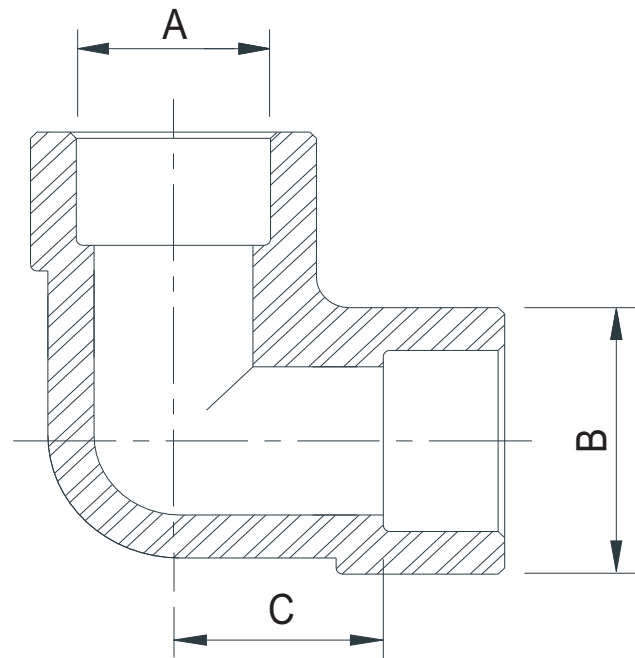


CLASS  
3000



## SOCKET WELDED ELBOW 90°

No.	Size	A	B	C	Weight
		(mm)	(mm)	(mm)	(Kg / Pc)
1.	3/8"	17.8	26.2	13.9	0.11
2.	1/2"	22.0	34.0	16.7	0.22
3.	3/4"	27.5	39.1	19.6	0.31
4.	1"	34.0	47.0	23.8	0.52
5.	1 1/4"	43.0	57.4	27.5	0.79
6.	1 1/2"	49.1	64.1	33.0	1.02
7.	2"	61.5	75.9	38.0	1.46
8.	3"	90.0	112.8	57.0	2.52