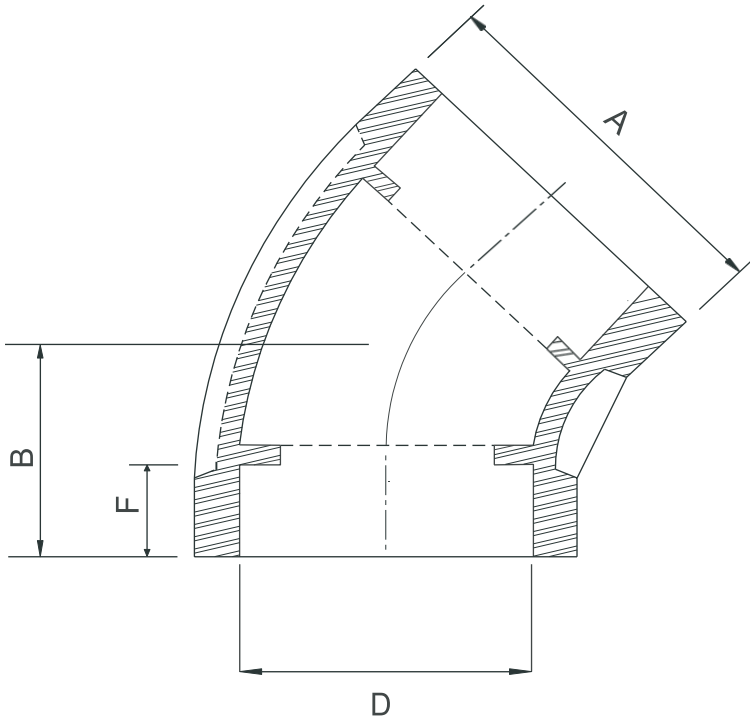




# STAINLESS STEEL SOCKET WELDED FITTINGS

DIMENSION CONFORM TO ANSI/MSS SP-114-2018  
 MATERIAL CONFORM TO ASTM A351 GR. CF8 & CF8M  
 PRESSURE-TEMPERATURE RATINGS 300 PSI (-29 TO 66°C)  
 MADE BY LOST WAX INVESTMENT CASTING



## SOCKET WELD ELBOW 45°

Size	A (mm)	B (mm)	D (mm)	F (mm)	Weight (Kg/Pc)
1/8"	14.00	15.30	11.00	7.00	0.024
1/4"	17.40	18.50	14.40	7.00	0.049
3/8"	21.00	20.00	17.70	8.00	0.073
1/2"	26.80	20.00	22.00	8.00	0.098
3/4"	32.30	23.90	27.50	10.0	0.146
1"	39.80	27.90	34.20	10.0	0.195
1 1/4"	49.00	33.10	43.00	12.0	0.243
1 1/2"	55.80	36.10	49.00	12.0	0.293
2"	69.00	42.00	61.20	13.0	0.381
2 1/2"	90.00	49.10	74.20	19.0	0.488
3"	100.0	54.20	90.00	21.0	0.585
4"	127.0	65.20	115.5	22.0	0.784