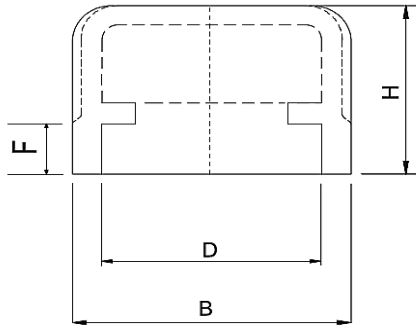




STAINLESS STEEL SOCKET WELDED FITTINGS

DIMENSION CONFORM TO ANSI/MSS SP-114-2018
 MATERIAL CONFORM TO ASTM A351 GR. CF8 & CF8M
 PRESSURE-TEMPERATURE RATINGS 300 PSI (-29 TO 66°C)
 MADE BY LOST WAX INVESTMENT CASTING



SOCKET WELD ROUND CAP

SIZE	B	H	D	F	Weight
	(mm)	(mm)	(mm)	(mm)	(Kg/Pc)
1/8"	14.0	17.0	11.0	7.0	0.007
1/4"	17.2	18.0	14.4	7.0	0.008
3/8"	21.0	18.0	17.7	8.0	0.013
1/2"	26.5	20.0	22.0	8.0	0.028
3/4"	32.5	22.0	27.5	10.0	0.050
1"	39.8	26.0	34.2	10.0	0.073
1 1/4"	49.0	28.0	43.0	12.0	0.107
1 1/2"	55.7	31.5	49.0	12.0	0.156
2"	68.4	34.2	61.2	13.0	0.227
2 1/2"	90.0	37.5	74.2	19.0	0.600
3"	100.0	40.0	90.0	21.0	0.610
4"	127.5	40.0	115.5	22.0	0.972