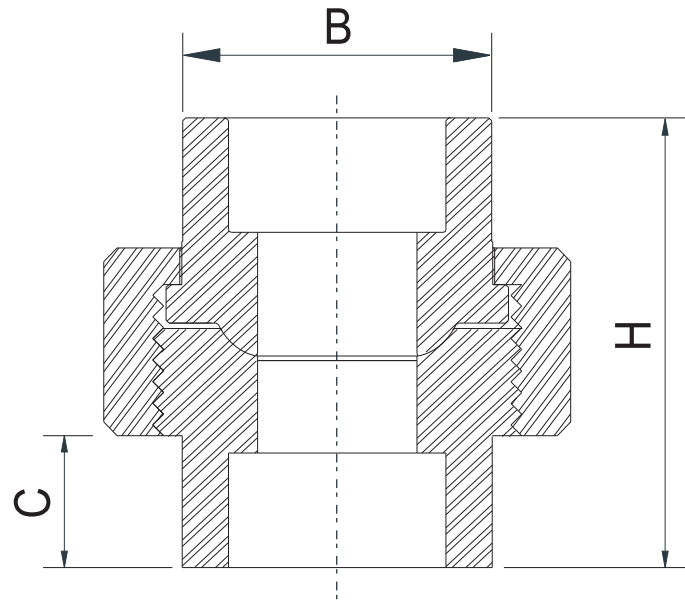


CLASS
3000



SOCKET WELDED UNION CONICAL SEAT

No.	Size	B	C	H	Weight
		(mm)	(mm)	(mm)	(Kg / Pc)
1.	1/2"	22.1	14.4	49.1	0.35
2.	3/4"	27.5	17.0	57.0	0.49
3.	1"	34.2	19.0	62.5	0.75