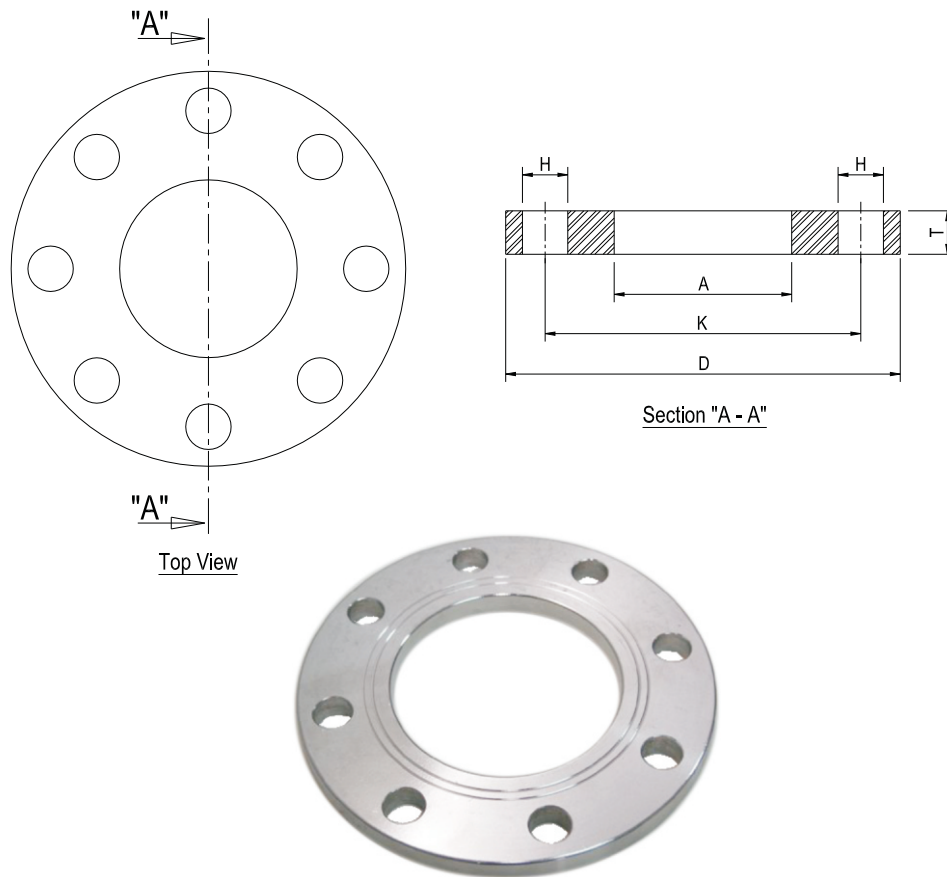


## JIS 10K

Size		Flange				Drilling		Weight
mm	inch	D	A	T	K	Bolt no.	H	Kg / Pc
DN 15	½"	95	22.2	12	70	4	15	0.57
DN 20	¾"	100	27.7	14	75	4	15	0.72
DN 25	1"	125	34.5	14	90	4	19	1.13
DN 32	1¼"	135	43.2	16	100	4	19	1.48
DN 40	1½"	140	49.1	16	105	4	19	1.56
DN 50	2"	155	61.1	16	120	4	19	1.87
DN 65	2½"	175	77.1	18	140	4	19	2.59
DN 80	3"	185	90	18	150	8	19	2.59
DN 100	4"	210	115.4	18	175	8	19	3.11
DN 125	5"	250	141.2	20	210	8	23	4.75
DN 150	6"	280	166.6	22	240	8	23	6.33
DN 200	8"	330	218	22	290	12	23	7.51
DN 250	10"	400	269.5	24	355	12	25	11.88
DN 300	12"	445	321	24	400	16	25	12.65
DN 350	14"	490	358.1	26	445	16	25	16.42
DN 400	16"	560	409	28	510	16	27	23.38
DN 450	18"	620	460	30	565	20	27	29.43
DN 500	20"	675	511	30	620	20	27	33.47
DN 550	22"	745	562	32	680	20	33	43.13
DN 600	24"	795	613	32	730	24	33	45.66



## JIS 10K NON STANDARD

Size		Flange				Drilling		Weight
mm	inch	D	A	T	K	Bolt no.	H	Kg / Pc
DN 15	½"	95	22.2	10	70	4	15	0.47
DN 20	¾"	100	27.7	12	75	4	15	0.62
DN 25	1"	125	34.5	12	90	4	19	0.97
DN 32	1¼"	135	43.2	14	100	4	19	1.29
DN 40	1½"	140	49.1	14	105	4	19	1.37
DN 50	2"	155	61.1	14	120	4	19	1.64
DN 65	2½"	175	77.1	14	140	4	19	2.02
DN 80	3"	185	90	14	150	8	19	2.02
DN 100	4"	210	115.4	14	175	8	19	2.42
DN 125	5"	250	141.2	17	210	8	23	4.04
DN 150	6"	280	166.6	18	240	8	23	5.18
DN 200	8"	330	218	19	290	12	23	6.48
DN 250	10"	400	269.5	20	355	12	25	9.90
DN 300	12"	445	321	20	400	16	25	10.54
DN 350	14"	490	358.1	21	445	16	25	13.26
DN 400	16"	560	409	22	510	16	27	18.37
DN 450	18"	620	460	24	565	20	27	23.54
DN 500	20"	675	511	24	620	20	27	26.77
DN 550	22"	745	562	25	680	20	33	33.70
DN 600	24"	795	613	25	730	24	33	35.67