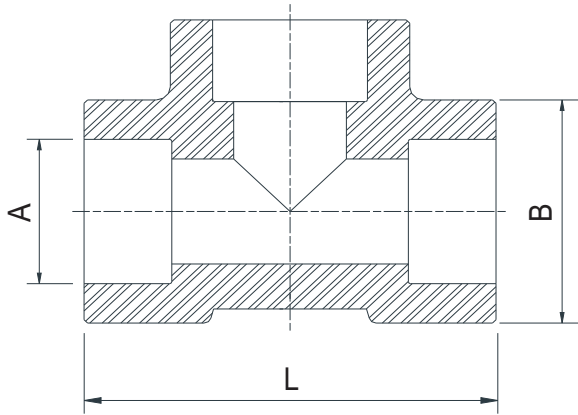


**CLASS
3000**



SOCKET WELDED EQUAL TEE

No.	Size	A	B	L	Weight
		(mm)	(mm)	(mm)	(Kg / Pc)
1.	3/8"	17.9	29.0	50.0	0.15
2.	1/2"	22.0	33.6	58.6	0.31
3.	3/4"	27.5	39.0	66.4	0.40
4.	1"	34.2	45.6	75.6	0.63
5.	1 1/4"	42.7	53.3	79.0	0.80
6.	1 1/2"	48.9	63.3	101.6	1.35
7.	2"	61.4	76.4	120.2	1.91