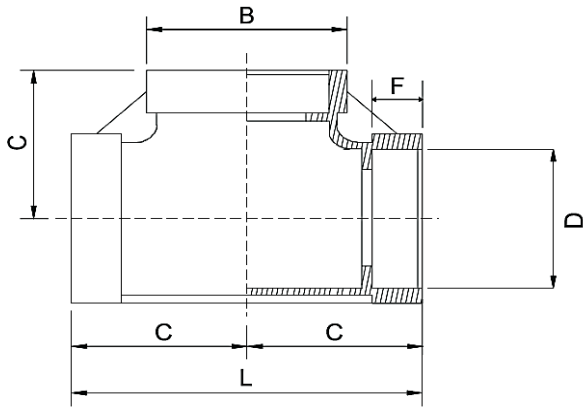




STAINLESS STEEL

SOCKET WELDED FITTINGS

DIMENSION CONFORM TO ANSI/MSS SP-114-2018
 MATERIAL CONFORM TO ASTM A351 GR. CF8 & CF8M
 PRESSURE-TEMPERATURE RATINGS 300 PSI (-29 TO 66°C)
 MADE BY LOST WAX INVESTMENT CASTING



SOCKET WELD TEE

SIZE	B	C	L	D	F	Weight
	(mm)	(mm)	(mm)	(mm)	(mm)	(Kg/Pc)
1/8"	14.0	17.00	34.0	11.0	7.0	0.015
1/4"	17.3	18.80	37.5	14.4	7.0	0.038
3/8"	21.0	21.00	42.0	17.7	8.0	0.054
1/2"	26.5	26.30	52.5	22.0	8.0	0.080
3/4"	32.0	30.00	60.0	27.5	10.0	0.120
1"	39.4	34.50	69.0	34.2	10.0	0.173
1 1/4"	50.0	41.80	83.5	43.0	12.0	0.300
1 1/2"	57.6	46.00	92.0	49.0	12.0	0.450
2"	69.0	52.00	104.0	61.2	13.0	0.600
2 1/2"	90.0	67.00	134.0	74.2	19.0	1.490
3"	100.0	74.50	149.0	90.0	21.0	1.500
4"	127.0	90.50	181.0	115.5	22.0	2.300